

PLOTTED: Nov 30, 2016--11:57am

OPERATOR: cmiller  
FILE NAME: C:\Civil 3D Projects\002644\_0425\Plan Sets\CONSTR\0026440425LADT.dwg Layout: A11

DECORATIVE BENCHES		
NO.	STATION	OFFSET
①	469+46	22' RT
②	471+21	22' RT
③	471+46	22' RT
④	472+91	22' RT
⑤	469+45	23' LT
⑥	471+20	23' LT
⑦	471+50	23' LT
⑧	473+05	23' LT

STATION/OFFSETS ARE APPROXIMATE. FINAL LOCATION OF BENCHES TO BE VERIFIED BY ZELIENOPLE BOROUGH MAINTENANCE PRIOR TO INSTALLATION.

TRASH CAN RECEPTACLES		
NO.	STATION	OFFSET
①	469+54	23' RT
②	471+39	23' RT
③	472+82	23' RT
④	469+54	23' LT
⑤	471+41	24' LT
⑥	472+92	23' LT

STATION/OFFSETS ARE APPROXIMATE. FINAL LOCATION OF TRASH CANS TO BE VERIFIED BY ZELIENOPLE BOROUGH MAINTENANCE PRIOR TO INSTALLATION.

BIKE RACKS		
NO.	STATION	OFFSET
①	469+30	22' RT

STATION/OFFSETS ARE APPROXIMATE. FINAL LOCATION OF BIKE RACKS TO BE VERIFIED BY ZELIENOPLE BOROUGH MAINTENANCE PRIOR TO INSTALLATION.

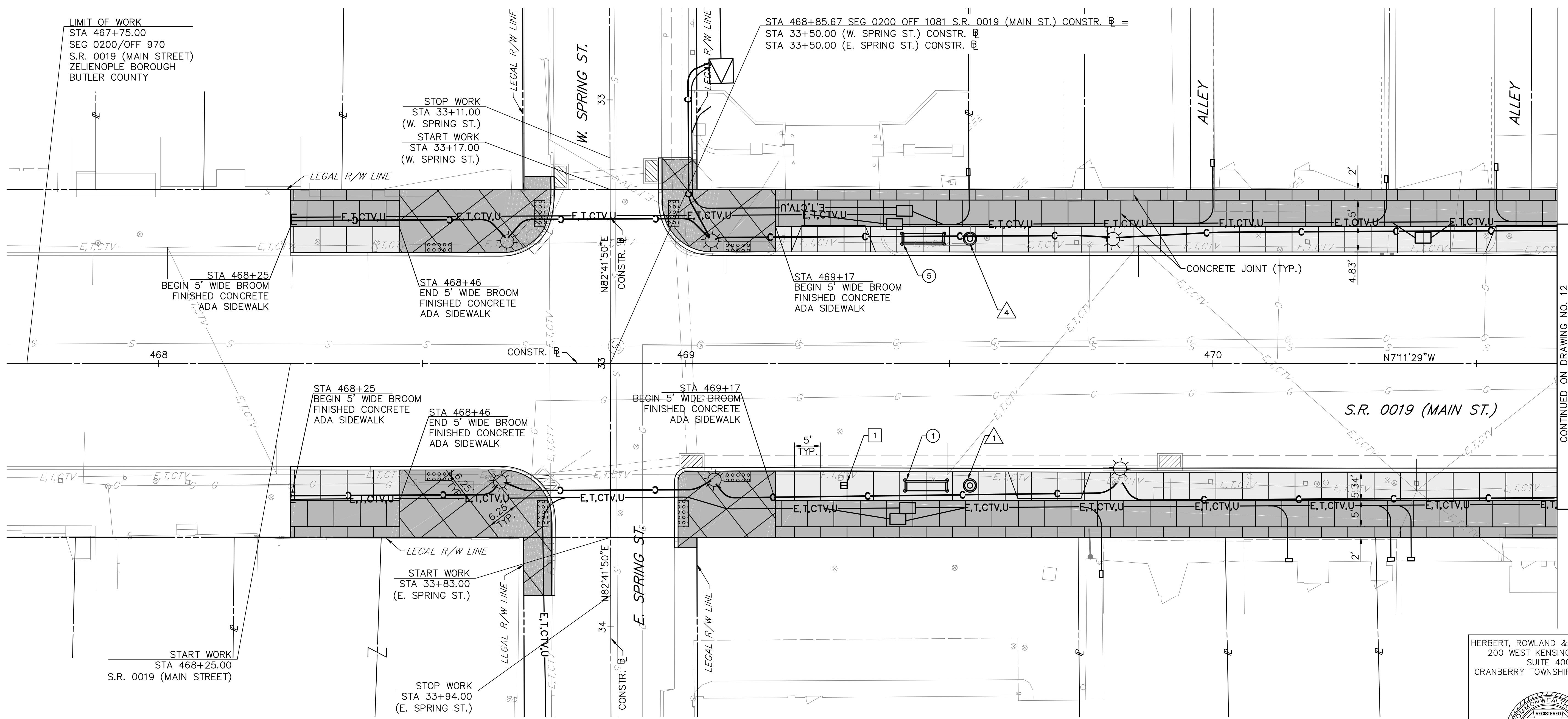
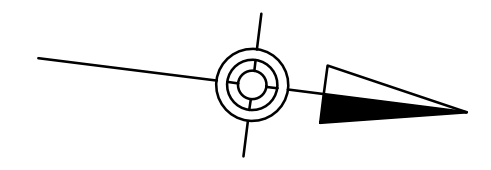
**PROPOSED LEGEND**

- BROOM FINISHED CONCRETE SIDEWALK
- STAMPED CONCRETE SIDEWALK
- DECORATIVE BENCH
- TRASH CAN RECEPTACLE
- BIKE RACK
- DECORATIVE BENCH CALL-OUT
- TRASH CAN RECEPTACLE CALL-OUT
- BIKE RACK CALL-OUT
- LUMINAIRE FOUNDATION
- UNDERGROUND ELECTRIC, TELEVISION, & CABLE LINE
- LIGHTING CONDUIT

**EXISTING LEGEND**

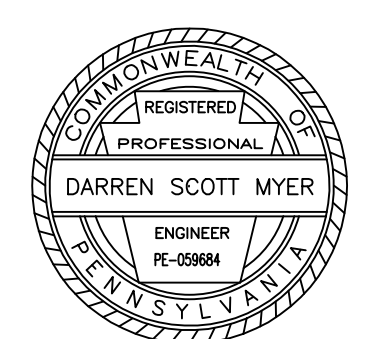
- WATER VALVE
- GAS VALVE
- FIRE HYDRANT
- LIGHT STANDARD
- UTILITY POLE
- ELECTRICAL BOX
- MANHOLE
- E, T, CTV — ELECTRIC, TELEVISION, CABLE LINE
- W — WATER LINE
- G — GAS LINE
- S — SANITARY LINE

DISTRICT	COUNTY	ROUTE	SECTION	SHEET
10-0	BUTLER	0019	299/298	11 OF 16
ZELIENOPLE BOROUGH				
REVISION NUMBER	REVISIONS			DATE BY



CONTINUED ON DRAWING NO. 12

HERBERT, ROWLAND & GRUBIC, INC.  
200 WEST KENSINGER DRIVE  
SUITE 400  
CRANBERRY TOWNSHIP, PA. 16066

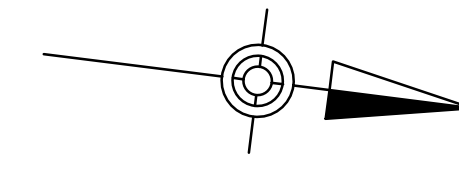


**LANDSCAPING DETAIL SHEET**

PLOTTED: Nov 17, 2016 - 5:29pm

OPERATOR: rjale  
FILE NAME: C:\Civil\3D Projects\002644\_0425\Plan Sets\CONSTR\0026440425LADT.dwg Layout: A12

DISTRICT	COUNTY	ROUTE	SECTION	SHEET
10-0	BUTLER	0019	299/298	12 OF 16
ZELIENOPLE BOROUGH				
REVISION NUMBER	REVISIONS			DATE BY



DECORATIVE BENCHES		
NO.	STATION	OFFSET
①	469+46	22' RT
②	471+21	22' RT
③	471+46	22' RT
④	472+91	22' RT
⑤	469+45	23' LT
⑥	471+20	23' LT
⑦	471+50	23' LT
⑧	473+05	23' LT

TRASH CAN RECEPTACLES		
NO.	STATION	OFFSET
①	469+54	23' RT
②	471+39	23' RT
③	472+82	23' RT
④	469+54	23' LT
⑤	471+41	24' LT
⑥	472+92	23' LT

STATION/OFFSETS ARE APPROXIMATE. FINAL LOCATION OF TRASH CANS TO BE VERIFIED BY ZELIENOPLE BOROUGH MAINTENANCE PRIOR TO INSTALLATION.

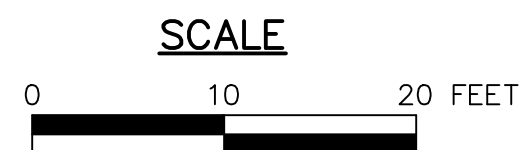
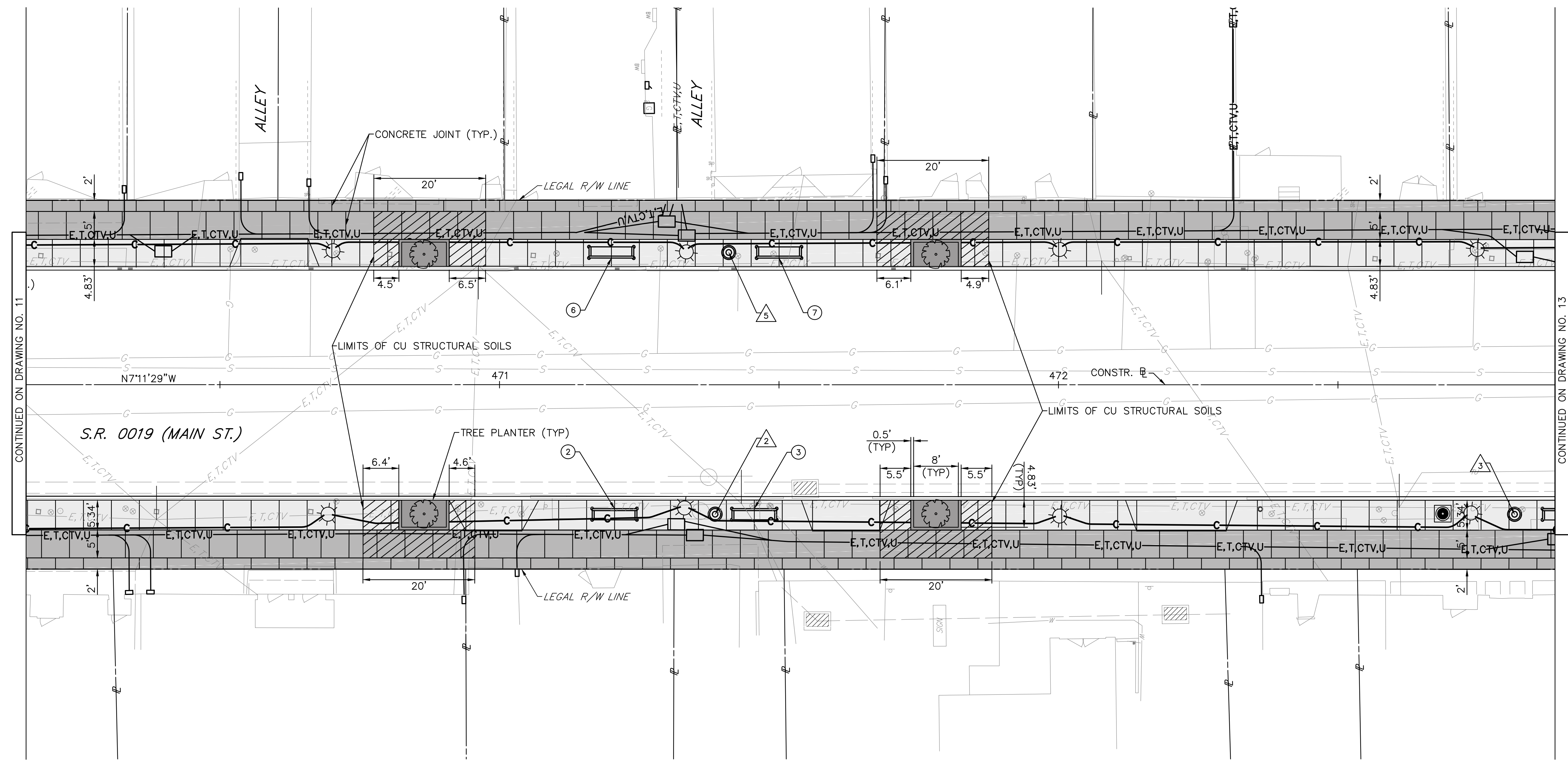
STATION/OFFSETS ARE APPROXIMATE. FINAL LOCATION OF BENCHES TO BE VERIFIED BY ZELIENOPLE BOROUGH MAINTENANCE PRIOR TO INSTALLATION.

**PROPOSED LEGEND**

- BROOM FINISHED CONCRETE SIDEWALK
- STAMPED CONCRETE SIDEWALK
- DECORATIVE BENCH
- TRASH CAN RECEPTACLE
- BIKE RACK
- DECORATIVE BENCH CALL-OUT
- TRASH CAN RECEPTACLE CALL-OUT
- BIKE RACK CALL-OUT
- TRAFFIC SIGNAL POLE
- LUMINAIRE FOUNDATION
- UNDERGROUND ELECTRIC, TELEVISION, & CABLE LINE
- LIGHTING CONDUIT
- TREE

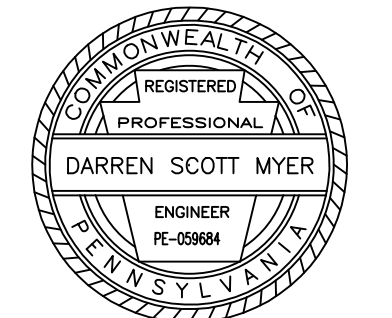
**EXISTING LEGEND**

- WATER VALVE
- GAS VALVE
- FIRE HYDRANT
- LIGHT STANDARD
- UTILITY POLE
- ELECTRICAL BOX
- MANHOLE
- ELECTRIC, TELEVISION, CABLE LINE
- WATER LINE
- GAS LINE
- SANITARY LINE



LANDSCAPING DETAIL SHEET

HERBERT, ROWLAND & GRUBIC, INC.  
200 WEST KENSINGER DRIVE  
SUITE 400  
CRANBERRY TOWNSHIP, PA. 16066



PLOTTED: Nov 28, 2016 - 3:10pm

OPERATOR: rminor  
FILE NAME: C:\Civil 3D Projects\002644\_0425\Plan Sets\CONSTR\T0026440425LADT.dwg Layout: A13

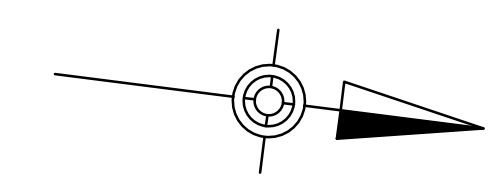
DECORATIVE BENCHES		
NO.	STATION	OFFSET
①	469+46	22' RT
②	471+21	22' RT
③	471+46	22' RT
④	472+91	22' RT
⑤	469+45	23' LT
⑥	471+20	23' LT
⑦	471+50	23' LT
⑧	473+05	23' LT

STATION/OFFSETS ARE APPROXIMATE. FINAL LOCATION OF BENCHES TO BE VERIFIED BY ZELIENOPLE BOROUGH MAINTENANCE PRIOR TO INSTALLATION.

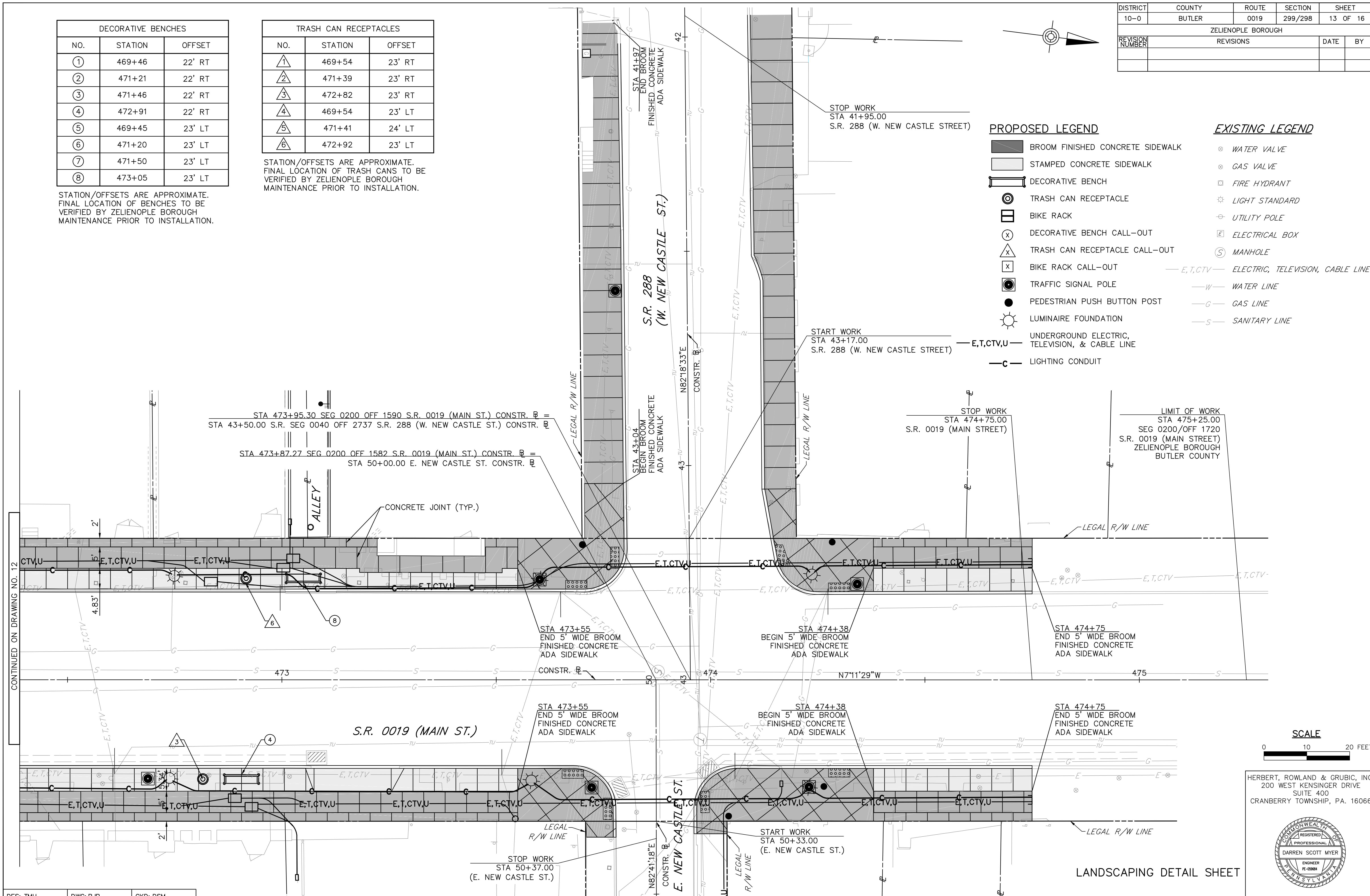
TRASH CAN RECEPTACLES		
NO.	STATION	OFFSET
①	469+54	23' RT
②	471+39	23' RT
③	472+82	23' RT
④	469+54	23' LT
⑤	471+41	24' LT
⑥	472+92	23' LT

STATION/OFFSETS ARE APPROXIMATE. FINAL LOCATION OF TRASH CANS TO BE VERIFIED BY ZELIENOPLE BOROUGH MAINTENANCE PRIOR TO INSTALLATION.

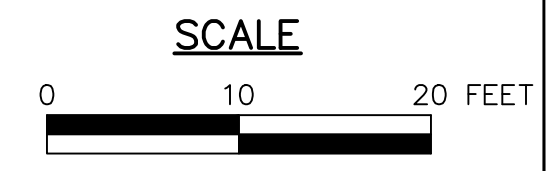
DISTRICT	COUNTY	ROUTE	SECTION	SHEET
10-0	BUTLER	0019	299/298	13 OF 16
ZELIENOPLE BOROUGH				
REVISION NUMBER	REVISIONS			DATE BY



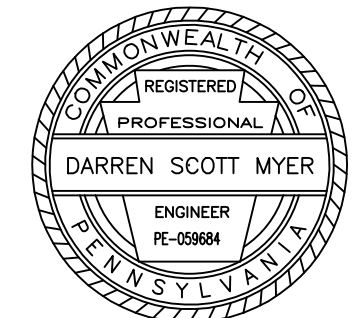
- PROPOSED LEGEND**
- BROOM FINISHED CONCRETE SIDEWALK
  - STAMPED CONCRETE SIDEWALK
  - DECORATIVE BENCH
  - TRASH CAN RECEPTACLE
  - BIKE RACK
  - DECORATIVE BENCH CALL-OUT
  - TRASH CAN RECEPTACLE CALL-OUT
  - BIKE RACK CALL-OUT
  - TRAFFIC SIGNAL POLE
  - PEDESTRIAN PUSH BUTTON POST
  - LUMINAIRE FOUNDATION
  - UNDERGROUND ELECTRIC, TELEVISION, & CABLE LINE
  - LIGHTING CONDUIT
- EXISTING LEGEND**
- WATER VALVE
  - GAS VALVE
  - FIRE HYDRANT
  - LIGHT STANDARD
  - UTILITY POLE
  - ELECTRICAL BOX
  - MANHOLE
  - ELECTRIC, TELEVISION, CABLE LINE
  - WATER LINE
  - GAS LINE
  - SANITARY LINE



CONTINUED ON DRAWING NO. 12



HERBERT, ROWLAND & GRUBIC, INC.  
200 WEST KENSINGER DRIVE  
SUITE 400  
CRANBERRY TOWNSHIP, PA. 16066



LANDSCAPING DETAIL SHEET